

£365,000

GROVE AVENUE, PORTCHESTER, PO16 9EX



- Three Bedrooms
- Entrance Hallway
- Lounge
- Fitted Kitchen
- Dining Room
- Shower Room
- Double Glazing
- Gas Central Heating
- Off Road Parking
- Garage/Workshop
- Generous Enclosed West Facing Rear Garden
- No Onward Chain

Portchester Office

92 West Street Portchester Hampshire PO16 9UQ

Tel: 02392 327 070 | E: portchester@fenwicks-estates.co.uk

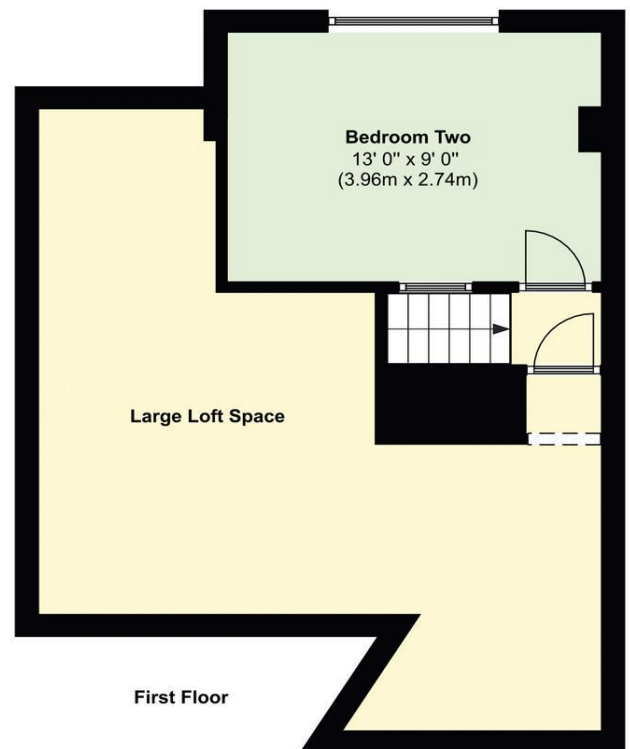
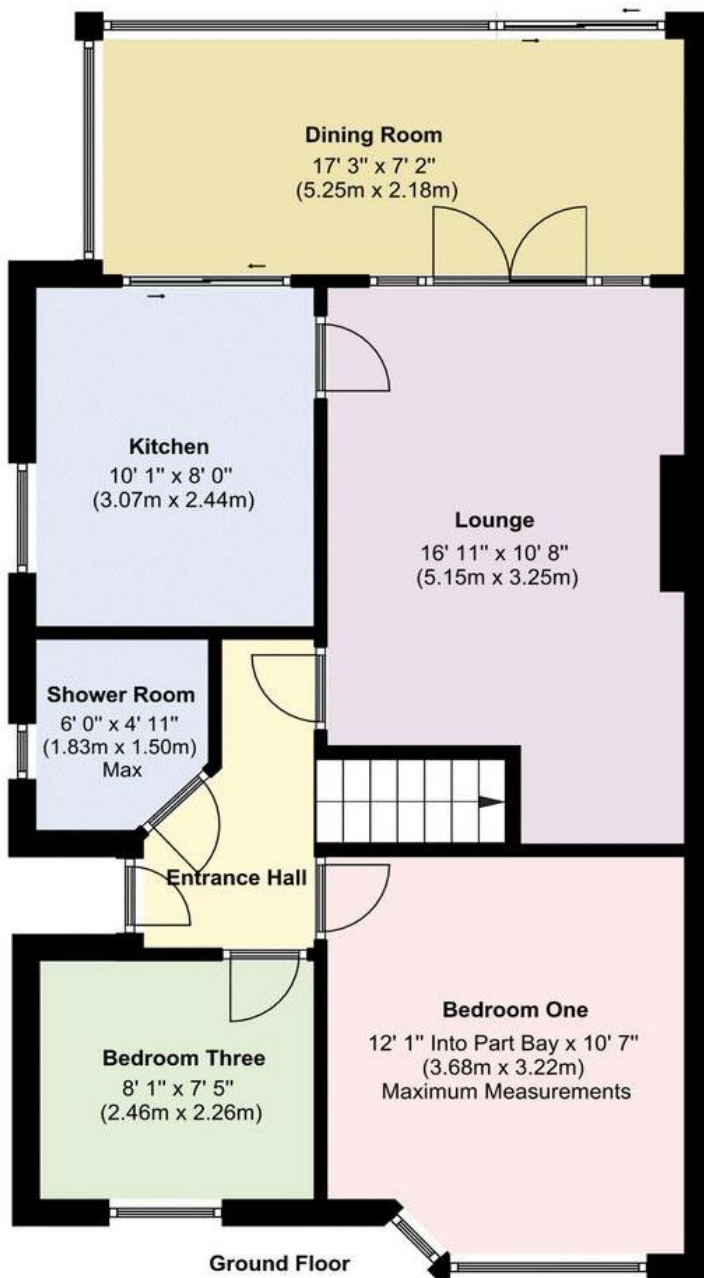
www.fenwicks-estates.co.uk

Property Reference: P2586

Council Tax Band:

Score	Energy rating	Current	Potential
92+	A		
81-91	B		87 B
69-80	C		
55-68	D	62 D	
39-54	E		
21-38	F		
1-20	G		

Floor Plans (For illustrative purposes and not drawn exactly to scale)



Portchester Office

92 West Street Portchester Hampshire PO16 9UQ
 Tel: 02392 327 070 | E: portchester@fenwicks-estates.co.uk
 www.fenwicks-estates.co.uk



The Accommodation Comprises:-

UPVC part double glazed front door into:

Entrance Hall:-

Stairs to first floor and radiator. Doors to:

Lounge:-

16' 11" x 10' 8" (5.15m x 3.25m)

Feature fireplace with gas fire inset and mantle over, TV aerial point, radiator and glazed double opening doors with matching side panels leading to dining room. Further internal door to:



Kitchen:-

10' 1" x 8' 0" (3.07m x 2.44m)

Opaque UPVC double glazed window to side elevation, fitted matching base, eye level and glass display units with underlighting to wall units, roll top work surfaces, one and a half bowl stainless steel sink unit with mixer tap, part tiled walls, built-in double oven with gas hob above and extractor over, space for tall fridge/freezer, space and plumbing for washing machine and flat ceiling with spotlighting inset. UPVC double glazed sliding door to:

Dining Room:-

17' 3" x 7' 2" (5.25m x 2.18m)

UPVC double glazed windows and sliding patio door overlooking and accessing the rear garden, wall mounted gas heater and space for table and chairs.

Portchester Office

92 West Street Portchester Hampshire PO16 9UQ

Tel: 02392 327 070 | E: portchester@fenwicks-estates.co.uk

www.fenwicks-estates.co.uk





Bedroom One:-
12' 1" Into Part Bay x 10' 7" (3.68m x 3.22m) Maximum Measurements

UPVC double glazed part bay window to front elevation and radiator.



Shower Room:-
6' 0" x 4' 11" (1.83m x 1.50m) Maximum Measurements

Opaque UPVC double glazed window to side elevation, modern suite comprising: shower cubicle with Mira electric shower, wash hand basin inset vanity unit, WC with concealed cistern and shelf above, chrome heated towel rail, part tiled walls, radiator, wood effect laminate flooring and flat ceiling with spotlighting inset.



Bedroom Three:-
8' 1" x 7' 5" (2.46m x 2.26m)

UPVC double glazed window to front elevation and radiator.



First Floor Landing:-

Flat and sloping ceiling, door to bedroom two and additional door leads to a large wrap around loft space with light and the potential to extend (stpp).

Bedroom Two:-
13' 0" x 9' 0" (3.96m x 2.74m)

UPVC double glazed window to rear elevation overlooking the garden, radiator, glazed window to stairwell and coving to textured ceiling.

Portchester Office

92 West Street Portchester Hampshire PO16 9UQ

Tel: 02392 327 070 | E: portchester@fenwicks-estates.co.uk

www.fenwicks-estates.co.uk





Outside:-

Block paved off street parking with lawn section to side and low brick retaining wall, pedestrian side access with water tap leads to garage/workshop with up and over door and side courtesy door. Wooden gate to:

Rear Garden:-

West facing, generous size, patio area with space for table and chairs for entertaining purposes with raised flower bed to side, outside lighting, remainder laid mainly to lawn, raised section to rear with shingle area and AstroTurf.



Portchester Office

92 West Street Portchester Hampshire PO16 9UQ

Tel: 02392 327 070 | E: portchester@fenwicks-estates.co.uk

www.fenwicks-estates.co.uk

Disclaimer: These particulars are set out as a general outline in accordance with the Consumer Protection from Unfair Trading Regulations 2008 (CPR's) and Business Protection from Misleading Marketing Regulations 2008 (BPR's) only for the guidance of intending purchasers or lessees, and do not constitute any part of an offer or contract. Details are given without any responsibility, and any intending purchasers, lessees or third parties should not rely on them as statements or representations of fact, but must satisfy themselves by inspection or otherwise as to the correctness of each of them.

We have not carried out a structural survey and the services, appliances and specific fittings have not been tested. All photographs, measurements, floor plans and distances referred to are given as a guide only and should not be relied upon for the purchase of carpets or any other fixtures or fittings. Gardens, roof terraces, balconies and communal gardens as well as tenure and lease details cannot have their accuracy guaranteed for intending purchasers. Lease details, service ground rent (where applicable) are given as a guide only and should be checked and confirmed by your solicitor prior to exchange of contracts.

No person in the employment of Fenwicks Estates Ltd has any authority to make any representation or warranty whatever in relation to this property. Purchase prices, rents or other prices quoted are correct at the date of publication and, unless otherwise stated, exclusive of VAT.

Data Protection: We retain the copyright in all advertising material used to market this Property.

Money Laundering Regulations 2017: Intending purchasers will be required to produce identification documentation once an offer is accepted

Your home is at risk if you do not keep up repayments on mortgage or other secured loans.

Portchester Office

92 West Street Portchester Hampshire PO16 9UQ

Tel: 02392 327 070 | E: portchester@fenwicks-estates.co.uk

www.fenwicks-estates.co.uk

